

2024



# Construction Report 2024

Norway House Cree Nation



# Table of Contents

Chief and Council Message	2
Fibre Report	4
820 Taylor	5
24x24 Home Construction	6
24-Unit Exterior Improvements	7
Business Centre	8
Swimming Pond	9
Health Centre of Excellence	10
Teacherage Renovation	11
Fort Island Daycare	12
Rossville Daycare Improvements	13
Pinaow Wachi Improvements	14
Housing Projects	15
Internal Roads Repair Project	16
Food Court	18
Grocery Store	19
Cree Nation Timber Sawmill	20
Playgreen Lake Sediment Transport Study	21
Rossville School Site Remediation	22
Run of the River Report	24
Sea Falls Bridge	25

## **Tansi. Kitatamiskatinawow Nitotemak,**

Greetings to our members of Norway House Cree Nation and our Partners and Associates.

We are pleased to present this construction report, which highlights our ongoing commitment to community development and sustainability as we move forward building our nation. This report outlines the progress of our recent projects, and aims to provide insight into the job creation designed to enhance the quality of life for all members of our community while respecting and preserving our natural environment.

Our focus remains on creating infrastructure that not only meets the current needs of our community but also ensures a sustainable future for generations to come. We have prioritized the hiring of our own people, eco-friendly building practices, the use of renewable resources, and the integration of traditional knowledge and modern technology. By doing so, we aim to create a harmonious balance between development and environmental stewardship.

Throughout this journey, we have undertaken several initiatives aimed at fostering a sense of unity and resilience within our community. These initiatives include the construction of new community facilities, the enhancement of existing infrastructure, and the implementation of sustainable practices in all our projects. By incorporating sustainable practices, we are not only addressing immediate needs but also laying the groundwork for a healthier, more sustainable environment. Our projects are a testament to our dedication to building our nation.



The most important construction project we are working on is the building of more family homes. Our goal continues to be putting families in homes to address the overcrowding of homes and to provide healthy homes for families to work at improving their lives and that of future generations. Another goal is to improve business opportunities in and outside of Norway House Cree Nation. In order to generate wealth, we must work beyond our borders to attract additional revenue and benefits for our members.

Norway House Cree Nation has a dynamic and growing youth population that want and need opportunities for education, training and employment. As leaders it is our role to work at ensuring those opportunities exist for our members. You will see in this report the projects that will increase opportunities for our members, from the Seafalls Bridge to the 820 Taylor Building and the Business Centre.

We are grateful for the support and input from community members, which has been invaluable in guiding these projects. Your feedback has helped shape our approach, ensuring that the developments align with our shared values and aspirations. We have held numerous community meetings and consultations to gather your insights and incorporate them into our planning and execution processes. This collaborative approach has strengthened our community and ensured that our projects truly reflect the needs and desires of our members.

Together, we are building a stronger, more resilient nation that continues to progress and looks forward to a prosperous future. Our commitment to sustainability and community development is unwavering, and we are excited about the positive impact these projects will have on our nation. We believe that by working together, we can create a thriving nation for all.

As leadership we continue to work towards achieving the Strategic goals identified early in our terms, and our vision for a thriving nation with Infrastructure that can benefit all of our members includes the children.

Thank you for your continued trust and collaboration. We look forward to your ongoing support as we continue to build a better future for our Nation.

### **Chief Larson Anderson and Council**





## Fibre Report

The fibre project consists of four complex phases. Phase one was the laying of 240 km of fibre optic cable from Bipole III to Norway House. This has been completed. Phase two is to extend the fibre line from the Multiplex to the new Health Centre, and this will be completed before Christmas.

We are awaiting finalization of a legal agreement between Cross Lake, Norway House and Manitoba Hydro to establish a 1 meg connection of internet through the new fibre cable. This connection will be completed by early November.

The equipment required to allow much greater data flow to the community will be ordered by Manitoba Hydro in October but with shipping delays and the required finalization of further legal agreements, it is expected that the new equipment will be installed by spring 2025.

Phase three of the project is currently underway. This involves the erection of a new tower, installation of new radios on all seven towers, and finally extending the fibre line to each tower. This phase will be completed by Christmas 2025.

The final phase of this project is the installation of new high-speed radios on the homes of Norway House Broadband fibre subscribers.

The final cost of this four-phase project will be in excess of \$45 million to install world class technology to benefit Norway House Cree Nation members with access to high-speed internet.



## 820 Taylor Avenue Building

Redevelopment of an approximately 200,000 sq. ft. primarily office use building at 820 Taylor in Winnipeg, Manitoba. Future uses within the redeveloped building will consist of medical, dental and pharmacy tenancies. As well as a 7000 sq. ft. daycare, 6000 sq. ft. conference centre, and office space on floors 2-4 that will be occupied by Jordan's Principal, Norway House Cree Nation, KSMA, and other office tenants to be secured in the future.

### 1. Approval Process

Project budget, plans and specifications are approved by NHCN Executive management or Chief and Council (Councillor responsible for project) prior to project proceeding. Once the project is underway all changes are reviewed with Executive management or C&C for approval prior to proceeding. Progress billings are sent to Executive management for approval prior to payment.

### 2. Construction Schedule

Start Date – March 2024

Completion – Fall 2027

### 3. Jobs Created During Construction

Currently we have 3 band members working on construction demolition.

All sub-trades contracted will be required to hire and train band members within their labour pool. It is estimated that 10% of workers will be indigenous, and priority will be given to NHCN band members for Winnipeg employment.

### 4. Jobs Created From Project

Once the building is finished it will offer job opportunities within culinary arts (cafeteria, coffee shop, conference space), janitorial, property management, medical, dental, pharmaceutical, occupational therapy, administration etc.



## 24 x 24 Home Construction

This project is the construction of 24' wide by 24' deep homes in Norway House Cree Nation. Chief and Council have a long term plan of constructing 100 of these homes. Each home contains two bedrooms with a single bathroom and will have independent sewer and water. Depending on the needs of the future occupant of the home an alternate design has been composed to build homes to an accessible standard to accommodate wheel chairs and aging in place. Housing is a priority, and updates are provided at Regular Band meetings.

### 1. Approval Process

Project budget, plans and specifications are approved by NHCN Executive management or Chief and Council (Councillor responsible for project) prior to project proceeding. Once the project is underway all changes are reviewed with Executive management or C&C for approval prior to proceeding. Progress billings are sent to Executive management for approval prior to payment.

### 2. Construction Schedule

Start Date – May 2024

Completion of first round of homes – Spring 2025 (*Dependant on number of houses to be built*)

### 3. Jobs Created During Construction

PDC to supply and install gravel pads, driveway and landscaping and to haul material from Winnipeg for houses.

Band Carpentry Contractor crew to construct homes (crew size of 10-15).

Public works for sewer and water services (crew size of 3-4).

### 4. Jobs Created From Project

Sewer and water services (1-2 people).



## 24-Unit Exterior Improvements

The 24-unit exterior improvement project consists of exterior improvements, interior demolition, and post fire remediation to the 24-unit apartment located on Lakeside Drive. The interior of the building has had all drywall, insulation, plumbing and electrical removed due to the aftermath of fire and bug infestation. The exterior of the building has been brought to a state that the building can withstand the impacts of weather without further degradation of the building. The exterior improvements consist of new windows, fascia, siding, eavestrough and roofing. This has been done to maintain the shell of the building in a positive state until funding is approved for interior reconstruction.

### 1. Approval Process

Project budget, plans and specifications are approved by NHCN Executive management or Chief and Council (Councillor responsible for project) prior to project proceeding. Once the project is underway all changes are reviewed with Executive management or C&C for approval prior to proceeding. Progress billings are sent to Executive management for approval prior to payment. NHCN members are kept informed at Regular Band Meetings.

### 2. Construction Schedule

**Start Date** – June 2024

**Completion** – September 2024 for exterior work. *(Interior reconstruction is awaiting final approval.)*

### 3. Jobs Created During Construction

Jobs were created for NHCN through demolition work, fencing setup, landscaping and cleanup work, as well as shipping and receiving of materials.

**Demolition:** 10 workers, 100 hours biweekly for 3 months.

**Fencing:** 4 workers, 8 hours per day for 2 days.

**PDC:** Garbage cleanup and garbage haul: 30 loads

**Shipping:** PDC haul 2 seacan containers from Winnipeg to NHCN.

### 4. Jobs Created From Project

Work will be created for an estimated 4 people as Occupational therapy and home care will be needed for Jordan's Principle families living in units once renovation is completed.



## Business Centre

The Business Center will include 2 connected buildings, creating a convenient and seamless experience for visitors. The first is a 16,000 sq. ft. grocery store, which will also house a variety of retail spaces, a pharmacy, and a convenience store to meet everyday needs. Connected to this is a 9,224 sq. ft. food court, offering a range of dining options in a lively setting.

In addition to these, a 15,524 sq. ft. Community or Veterans Hall will be built, providing space for 600-800 people to gather for events, meetings, or celebrations. To further enhance the area, upgrades to the nearby multiplex building are also planned, improving the overall facilities for the community.

### 1. Approval Process

Project budget, plans and specifications are approved by NHCN Executive management or Chief and Council (Councillor responsible for project) prior to project proceeding. Once the project is underway all changes are reviewed with Executive management or C&C for approval prior to proceeding. Progress billings are sent to Executive management for approval prior to payment. Members are informed at Regular Band Meetings.

### 2. Construction Schedule

Some key milestones and dates for the project (Grocery Store):

**Mobilization:** June 20, 2024 – July 24, 2024

**Commissioning and Closeout:** December 15, 2025 – January 30, 2026

### 3. Jobs Created During Construction

2 band members are currently employed on the project. As many as 15 band members are expected to be employed for the Business Centre throughout renovation.

### 4. Jobs Created From Project

Jobs will be created for an estimated 35 people to staff the food court, grocery store and pharmacy.



## Swimming Pond

The swimming pond project consists of a new 3 acre swimming pond that will be located immediately north of the baseball diamonds on Jenpeg Road. This swimming pond will consist of a sand lined pond with water that will be chemically treated to allow for people of all ages to enjoy throughout the summers to come. Future phases of the swimming pond (not yet approved) will see the addition of a water filtration system to automate the chemical stabilization and filtration of the water in the pond.

### 1. Approval Process

Project budget, plans and specifications are approved by NHCN Executive management or Chief and Council (Councillor responsible for project) prior to project proceeding. Once the project is underway all changes are reviewed with Executive management or C&C for approval prior to proceeding. Progress billings are sent to Executive management for approval prior to payment.

### 2. Construction Schedule

**Start Date** – Summer 2023

**Completion** – Fall 2024

**Operation** – Beginning Summer 2025

### 3. Jobs Created During Construction

Jobs are created are as follows: Highway Truck Drivers, Dozer Operators, Excavator Operators, Operator of a Sand Screener, and Labourers during construction.

Potential for landscaping scope which can be executed by band workforce.

### 4. Jobs Created From Project

Jobs will be created for landscaping maintenance, pool filling, water maintenance, and pool draining in fall. Lifeguards will be required during operation in summer.

An estimated 2-3 workers will be employed during operation.



## Health Centre of Excellence

Currently hospital construction project involves the development of the Diagnostic Imaging department, the Medical Device Reprocessing Department, and the outfitting of Inpatient Rooms and the Emergency Department with specialized lights and rooms for patient care. Additionally, the project includes extensive landscaping work, focusing on rough grading and installing finishes across multiple zones to enhance the facility's exterior environment.

### 1. Approval Process

Project budget, plans and specifications are approved by NHCN Executive management or Chief and Council (Councillor responsible for project) prior to project proceeding. Once the project is underway all changes are reviewed with Executive management or C&C for approval prior to proceeding. Progress billings are sent to Executive management for approval prior to payment.

### 2. Construction Schedule

Diagnostic Imaging is nearly complete, with Philips reviewing on September 23 for camera installation starting October 1, 2024.

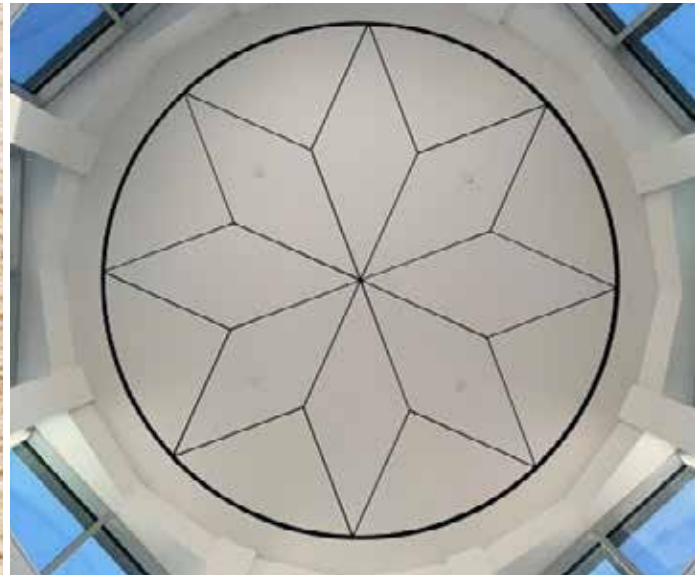
Interior finishes and equipment installation in Medical Device Reprocessing will be completed by the end of September.

Lights and booms installations in Inpatient Rooms and Emergency Department are finished and commissioned.

Landscaping is expected to conclude by the end of October 2024. Zone 8 rough grading is approved and ongoing, while Zone 4 remains the focus, both set to finish by September 30.

### 3. Jobs Created During Construction

4-5 band members are employed full-time. Playgreen Development Corporation is acting as a subcontractor for the landscaping scope, responsible for the supply and installation of all materials, alongside other subcontractors.



#### 4. Jobs Created From Project

Overall the Health Centre of Excellence (HCE) has created 596 jobs for NHCN Band Members to date. This equates to over 360,000 hours worked and wages earned of over \$9.6 million.

The HCE will employ over 175 full-time staff once operational. In collaboration with NHCN's Education, Training, and Culture Division and other stakeholders, the project will fill roles across medical sciences, procurement, maintenance, engineering, custodial services, and administration



## Teacherage Renovation

The teacherage renovation is the renovation of 8 dwelling units on Walter and Margaret Drive, immediately South of the Fort Island Bridge. The renovations consist of exterior and interior repairs and improvements to provide quality living accommodations for the Frontier School Division Staff when teaching within Norway House Cree Nation.

### 1. Approval Process

Project budget, plans and specifications are approved by NHCN Executive management or Chief and Council ( Councillor responsible for project)prior to project proceeding. Once the project is underway all changes are reviewed with Executive management and C&C for approval prior to proceeding. Progress billings are sent to Executive management for approval prior to payment.

### 2. Construction Schedule

Start Date – November 2023

Completion – September 2024

### 3. Jobs Created During Construction

Hauling of materials From WPG to NHCN by PDC

Electrical disconnection and reconnection by Norway House Subcontractor.

### 4. Jobs Created From Project

Sewer & water services (1-2 people)



## Fort Island Daycare

The Fort Island Daycare will be a modular daycare constructed by Sigfusson Construction. The building consists of a 7,100sf building constructed using 16 prefabricated modules. The 74 space daycare facility will be located immediately East of the current Professional Accommodations building on the Health Centre Campus. Of the 74 spaces, 48 will cater to preschool children, 10 will cater to toddlers, and 16 will cater to infants. Exterior play areas totaling over 17,000sf will be landscaped into four separate areas for the enjoyment of various ages of children attending the daycare.

### 1. Approval Process

This project was tendered through the Government of Manitoba for approval and is funded through the Government of Manitoba. Project budget, plans and specifications are approved by NHCN Executive management or Chief and Council (Councillor responsible for project) prior to project proceeding. Once the project is underway all changes are reviewed with Executive management and C&C for approval prior to proceeding. Progress billings are sent to Executive management for approval prior to payment.

### 2. Construction Schedule

IFC Set – September 2024

Start Date – September 2024

Building Handover – February 2025

Landscaping – June 2025

### 3. Jobs Created During Construction

- PDC for concrete and granular supply incl sand and parking lot/roadway aggregates
- Local labor will be utilized for the onsite works.
- Equipment may be rented from PDC

### 4. Jobs Created From Project

Jobs will be created for 15 Daycare staff for the 74 child daycare.



## Rossville Daycare Improvements

This project involves completing critical repairs and renovations for the Nikanihk Aschakosak Daycare Centre in Norway House Cree Nation. Key tasks include grading repairs, window and siding replacement, roofing, exterior staining, installation of rain gutters, and various safety upgrades. These renovations are essential for maintaining the structural integrity of the facility and ensuring the health and safety of children and staff. The work will take approximately 2-4 months with exception of sprinkler system upgrades and is expected to meet regulatory standards and improve the center's operational efficiency.

### 1. Approval Process

The funding was received as a part of First Nations and Inuit Child Care Initiative for Urgent Repairs and Renovation Needs, Repairs and Renovations required to meet Indigenous, provincial/territorial licensing standards and physical and education accessibility needs for children with disabilities. Project budget, plans and specifications are approved by NHCN Executive management or Chief and Council (Councillor responsible for project) prior to project proceeding. Once the project is underway all changes are reviewed with Executive management and C&C for approval prior to proceeding. Progress billings are sent to Executive management for approval prior to payment.

### 2. Construction Schedule

Start Date – July 2024

Completion – February 2025

### 3. Jobs Created During Construction

PDC for supplying material

### 4. Jobs Created From Project

N/A – Existing building.



## Pinaow Wachi Improvements

This project involves a series of exterior upgrades and installations at the Pinaow Wachi building. Key tasks include the installation of a 6' high wood fence, a 48'x12' deck, a pergola, sodding, and a 200' walkway. Additionally, adjustments will be made to the existing ramp to accommodate the new deck and walkway, and a gate will be installed. These improvements aim to enhance the building's functionality and aesthetics while ensuring compliance with safety standards.

### 1. Approval Process

Project budget, plans and specifications are approved by NHCN Senior management or Chief and Council (Councillor responsible for project) prior to project proceeding. Once the project is underway all changes are reviewed with Senior management and C&C for approval prior to proceeding. Progress billings are sent to senior management for approval prior to payment.

### 2. Construction Schedule

Start Date – July 2024

Completion – August 2025

### 3. Jobs Created During Construction

PDC for supplying material

### 4. Jobs Created From Project

N/A – Existing building.



## Housing Projects: (CMHC and ISC)

This project involves building on-reserve residential housing, funded by ISC and CMHC. The homes are constructed using traditional stick frame methods on mud-sil foundations by the NHCN Housing Department. Playgreen Development Corporation assists with lot grading and pad preparation, while the NHCN Public Works Department handles the sewer and water connections.

### 1. Approval Process

Projects eligibility determined by CMHC & ISC. Once approved, internal approvals are determined by management, and C&C.

### 2. Construction Schedule

**CMHC 13 units (22/23):** Start Date – Fall 2023 / Completion – October 2024

**ISC 3 units (23/24):** Start Date – Fall 2024 / Completion – Summer 2025

**CMHC 6 units (23/24):** Start Date – Fall 2023 / Completion – October 2024

**CMHC 10 units (24/25):** Start Date – Jan 2025 / Completion: Fall 2025

**ISC/CMHC Renovation:** Ongoing

### 3. Jobs Created During Construction

Warehouse Crew: 16 people (4 Drivers / 5 Helpers / 6 Security / 1 Admin)

Renovation Crew: 22 people

New Construction Crew: 24 people

M&E: 5 People

Management Team: 9 people

### 4. Jobs Created From Project

Sever & water services (1-2 people)



## Internal Roads Repair Project

The roads in Norway House Cree Nation have not been repaired for years, leading to significant deterioration and raising serious health and safety concerns. To address this issue, an agreement has been established between the Norway House Cree Nation (NHCN) and the Province of Manitoba to undertake an internal road repair project. This initiative aims to restore the roads to a safe and functional state, ensuring the well-being of the community and improving overall infrastructure.

### 1. Approval Process

Sections of PR #373 has been approved for surface rehabilitation from Kistapinan Drive to the Airport in conjunction with paving PR #373. Manitoba Transportation & Infrastructure and Municipal and Northern Relations in collaboration with NHCN will be paving approximately 30 km of provincial roads within and connect both NHCN and Northern Affairs community of Norway House.

### 2. Construction Schedule

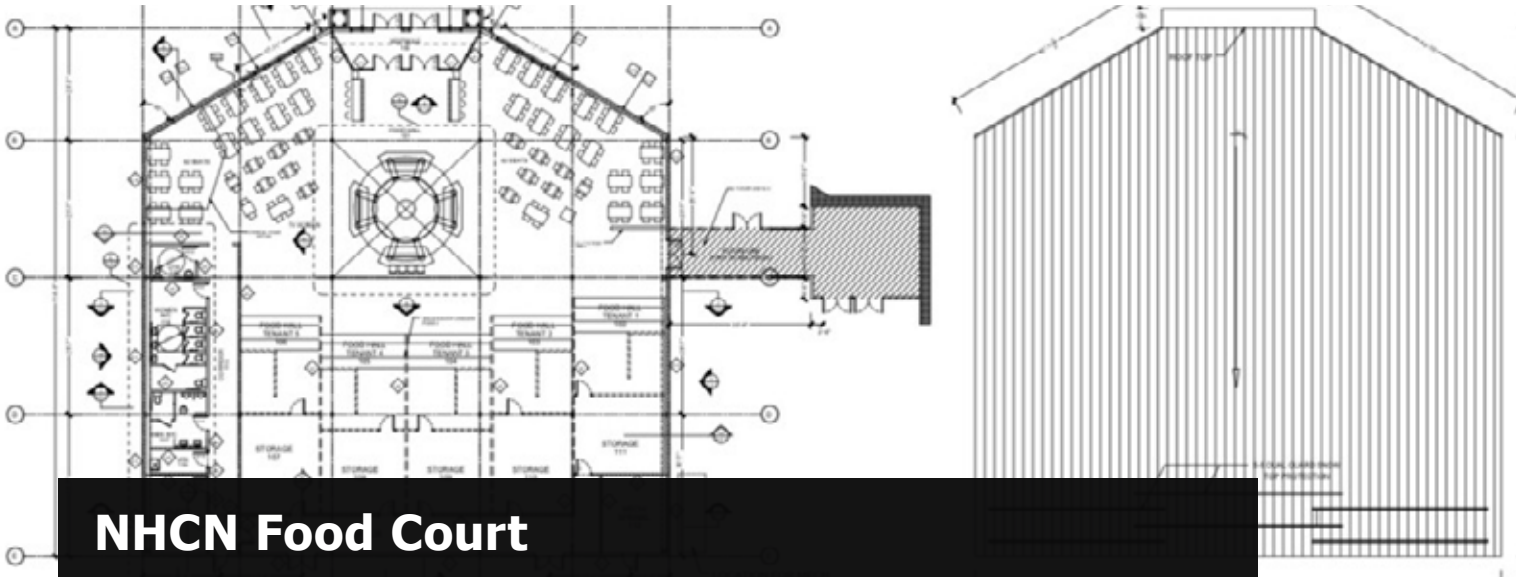
The project has been awarded to Wintec Building Services on August 28, 2024. Wintec plans to commence aggregate production in January 2025, with road construction set to begin in June 2025. This timeline ensures that all preparatory work is completed efficiently, allowing for a smooth transition into the construction phase.

### 3. Jobs Created During Construction

Wintec, the contractor responsible for the road repair project, will be required to hire members of the Norway House Cree Nation (NHCN) once construction begins. This initiative aims to ensure that the local community directly benefits from the project through job creation and economic opportunities.

### 4. Jobs Created From Project

All members of Norway House will benefit from the road repairs. Safe and reliable road infrastructure is essential as it enhances air quality with the reduction of gravel being used, and minimizes the risk of accidents. This improvement in infrastructure will not only boost economic growth but also improve the overall quality of life for residents by providing better access to essential services and recreational activities.



## NHCN Food Court

The new Food Court will feature five tenant spaces, bringing a range of dining options and creating a lively gathering space for the community. In our franchise selection process, we have focused on popular, community-oriented brands that meet our community's preferences and needs. As we progress, we are carefully reviewing the franchise details and requirements of each potential partner to ensure viability and alignment with our project's goals.

### Franchises Met With:

- Subway
- Fergie's Fish and Chips
- Dairy Queen (DQ)
- New York Fries
- A&W
- Robin's Donuts
- Starbucks "We Proudly Serve" Program
- Church's Chicken

### Franchises We Are Looking to Meet With:

- Booster Juice
- Quiznos
- Second Cup
- Chicken Chef

The development of the Food Court is part of our commitment to creating a community-centered space that supports local growth, provides new job opportunities, and offers convenience. We will continue to share updates on tenant confirmations and project progress as we move forward.



## NHCN Grocery Store

The Grocery Store is designed to offer a comprehensive shopping experience, bringing a high level of quality and selection tailored specifically to our community's needs. It will provide a wide range of groceries, including fresh produce, pantry staples, frozen foods, and essential household items, while also featuring a bakery with freshly baked breads and cakes, and a full-service deli and meat shop. Our goal is to offer top-quality, nutritious options that encourage well-being and make it easy and rewarding for community members to shop locally.

To ensure we deliver the most value possible, we have engaged in conversations with several large brands to explore partnerships that align with our community's needs and values. We aim to provide a shopping experience that emphasizes quality, freshness, and variety, making the store not only a valuable resource but also a source of pride for our community.



## Cree Nation Timber Sawmill

The Cree Nation Timber Sawmill, established in 2018, aims to provide employment opportunities and support the Nation's housing needs.

### Current Status:

We have successfully relocated to our new site, where a coverall has been installed. The site is equipped with a 400 amp 3-phase power hookup, and all our equipment has been moved and is fully operational. To further enhance our operations, we are in the process of installing a second coverall shelter. This will provide additional secure storage space for our equipment and supplies. We are also exploring options for containers that can be used as a kiln for drying the wood processed at our sawmill. This kiln will be crucial for ensuring the quality and efficiency of our wood drying process.

Now that the mill is fully operational at the new site, we are excited to scale up our operations. This expansion will enable us to mill more lumber, which will significantly support our housing department in constructing additional homes for the community. The increased production capacity will allow community members to purchase high-quality lumber directly from the Nation, promoting local economic growth and self-sufficiency.

### Projects

Over the past year, the Cree Nation Timber Sawmill has successfully supplied timber for a variety of local and external projects. Among our notable achievements was a significant contract with Churchill, Manitoba, completed in two phases. This project demonstrated our Nation's capability to handle and fulfill large-scale orders efficiently.

Locally, we provided timber for the Nanatawiwekamik Health Centre of Excellence construction project. We also met the needs of various NHCN departments and fulfilled paid orders for community members undertaking personal projects and renovations.

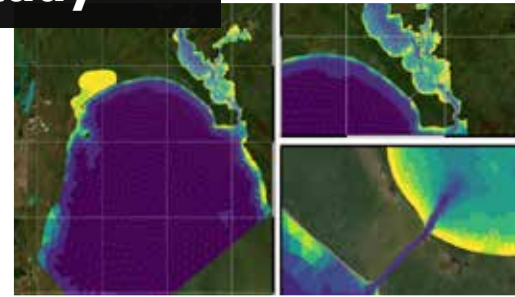
### Jobs Created

Currently, we have six band members employed at the Sawmill. As we ramp up operations this Fall, we anticipate hiring an additional eight to ten employees. These new team members will assist with the gathering and processing of materials, ensuring the Sawmill operates efficiently and meets increasing demand.



## Playgreen Lake Sediment Transport Study

Norway House Cree Nation has retained DHI Water & Environment Inc. (DHI) to complete a sediment transport study of Playgreen Lake. The purpose of the study is to investigate sediment transport and erosion within 2-mile channel and Playgreen Lake. The study will look at water levels, currents and waves and model how these factors can impact shoreline erosion, water quality and sedimentation within Playgreen Lake.



### The purpose of the study is to

- Describe the impact of Lake Winnipeg Regulation on sedimentation, erosion and water clarity.
- Define human and natural causes that drive changes on Playgreen Lake.
- Provide practical recommendations to reduce sediment in the lake.
- Inform how climate change will impact the future of the lake.

Once the model is developed, it will be able to run “what-if” scenarios, such as: “What would be the impact of sediment in the lake if there was no 2-Mile and 8-Mile channels?” and “How much of the sediment in the water in Playgreen Lake and Little Playgreen is from erosion in Lake Winnipeg and how much is from Playgreen Lake?” DHI is seeking input from Norway House Cree Nation on other “what-if” scenarios should be modelled. These conversations are ongoing.

### Construction Schedule

Project kick off	May 2024
Study of existing conditions, defining modeling scenarios and developing the model	October 2024
Assessment of the various model variables and forecasting scenarios	November 2024
Analysis and presentation of results	January 2025

# Former Rossville School Site Remediation

The Former Rossville School Site is listed as a contaminated site under the Federal Contaminated Sites Inventory Database (FCSI 00004333). Environmental Investigations between 2019 and 2021 by AECOM confirmed soil and groundwater impacts at 6 areas of potential environmental concern (APECs), 5 of which are located within the Site boundaries. Historical uses of the site include a Residential School and public school by Frontier School Division. Structures remaining on the Site include a multi-unit residence (former Frontier Teacherage) and former Frontier School Bus Garage and associated buildings.

In 2021, Norway House Cree Nation (NHCN) and Indigenous Services Canada (ISC) jointly agreed to commence a tendering process for a qualified firm to develop an environmental remedial plan to address contamination. The scope of work included the following tasks: 1.) Develop a Remedial Action Plan (RAP) and Design and Tender Package for implementation of the RAP; 2.) Conduct Geophysical surveys, including electromagnetic (EM) and ground penetrating radar (GPR) for potential gravesites associated with the former residential school; and 3.) Implementation of remediation activities, confirmatory sampling and site closure.

Stantec Consulting Ltd. was retained by the NHCN/ISC Team in 2021 to perform these services. The Team later retained PM Associates to Project Manage this initiative.

## Work Completed to Date:

Stantec completed the following tasks as of October 18, 2024:

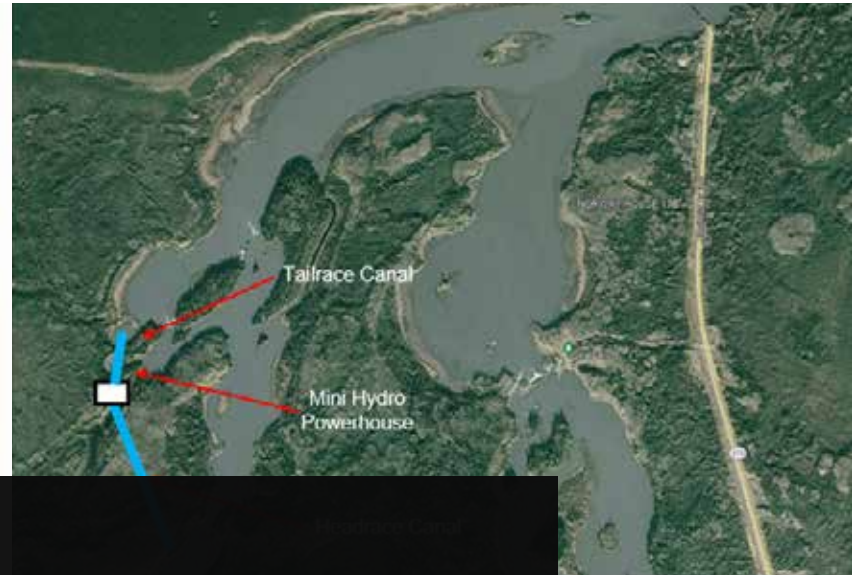
1. Technical review of previous reports, investigations, and assessment pertaining to the Site in 2021-22;
2. Conducted Electromagnetic Survey on 100% and GPR on approximately 50% of the Site in 2022, identifying 16 areas of interest (AOIs), none of which were deemed consistent with a typical grave. Eight of the 16 AOIs were eliminated as potential graves in 2023 due to confirmation during ground-truthing activities or through local knowledge. An archeological team will attend onsite during excavation activities to conduct ground-truthing of the remaining 8 AOIs and potential archeological encounters.
3. Completed the Remedial Action Plan in summer 2024.
  - Remediation will include excavation of impacted soil for disposal at a local soil treatment facility (STF).
  - Excavated areas will be backfilled from a local borrow source.
  - Soil samples will be collected from excavated areas to ensure remediation is fully achieved.
4. Completed the Design and Tender Package & Cost Estimate which are under final review by the NHCN/ISC Team.

## Upcoming Work Schedule

- |  |                               |
|--|-------------------------------|
| 1. Public Tendering Process                        | November 2024                 |
| 2. Construction of Soil Treatment Facility (STF)   | October - November 2024       |
| 3. Excavation of impacted soils and hauling to STF | January - February 2025       |
| 4. Ground truthing of remaining AOIs               | To be Determined              |
| 5. Decommissioning of impacted structures          | To be Determined              |
| 6. Backfilling of excavation and site restoration  | Upon completion of excavation |
| 7. Post Remediation Schedule:                      | To be Determined              |
| • Annual Treatment & Monitoring at STF             |                               |

## Benefits to NHCN

- Full remediation of contaminated lands in NHCN Territory
- Former Rossville School Site lands to revert back to Reserve Status after operating under provincial administration for educational purposes
- Replacement of structures impacted by contamination and/or remediation activities, including:
  - Rossville Teacherages (Multi-Family Dwelling Unit)
  - Former Frontier Bus Garage and associated buildings
  - Basketball Court
- Creation of local employment & business opportunities
  - 25 construction jobs including supervisor, operators, labourers during remediation
  - Rental of NHCN owned construction equipment & accommodations
- Capacity building
  - STF Operation & Maintenance Training
- Improved environmental condition of lands in core area of Rossville
- Removal of site from the Federal Contaminated Sites Database
- Assessment of local borrow sites for future construction projects
- STF established near community for potential future environmental cleanups



## Run of the River Report

The Run of the River Project is an exciting initiative aimed at exploring renewable energy opportunities for the Norway House Cree Nation. This project aligns with the broader provincial and national goals of transitioning to renewable energy sources. By focusing on environmentally sustainable growth and self-reliance, the project embodies our commitment to a greener future.

We are actively seeking a grant from Indigenous Services Canada to fund a comprehensive feasibility study, which will provide critical insights and data to guide the project's development. In addition, we are pursuing partnerships and conducting extensive research to bring this vision to life. This project represents a significant step towards our Nations journey towards self-sufficiency and energy independence while also reinforcing our commitment to renewable energy resources that directly benefit our Nation.



## Seafalls Bridge Project

The Seafalls Bridge Project is an agreement between Norway House Cree Nation (NHCN) the Federal and Provincial Governments to fund the first stages of the bridge project. The project includes the design, environmental impacts and community engagements. The initial cost of these activities is \$5M, cost shared by both levels of government.

### 1. Approval Process

The Project team has met with leaderships and the community.

### 2. Construction Schedule

The Project team is currently finalizing the location and the design. This process will take about 1 year to complete. Once the design has been completed and approved by Norway House the next step is to work with both levels of government to finalize funding the construction of the bridge. The bridge could take 3 years to construct.

### 3. Jobs Created During Construction

Once bridge construction begins any contractor awarded a contract must hire Norway House Band Members.

**“If you have the courage to begin, you have the courage to succeed.”**

- David Viscott

As we continue to work on developing our nation, it is essential to reflect on the significant amount of work and numerous challenges we have overcome to reach our current position. The journey has not been easy, but our determination and resilience have been our guiding lights. We had the courage to begin this transformative journey, which we did by developing a comprehensive Strategic Plan. This plan has served as our roadmap, guiding our actions and decisions.

Moving forward, it is essential that we maintain the momentum we have built towards achieving our goals. This requires continuous effort, adaptability, and a steadfast commitment to our vision. As leaders, we are dedicated to working tirelessly to build a robust and prosperous nation that meets the diverse needs of all our members. Our commitment is unwavering, and we are prepared to face any future challenges with the same courage and determination that have brought us this far.

Together, we will continue to strive for excellence, ensuring that our nation not only grows but thrives, providing a better future for generations to come.

Ekosani.



**May God  
Continue to Bless  
Norway House Cree Nation**

